

62, 920kW Steam Turbine for Biomass Plant in Japan

Shin Nippon Machinery Co., Ltd. supplied a 62,920kW steam turbine to Daio Paper Corporation through Hitachi Zosen Corporation for Mishima plant located in Ehime prefecture.

This biomass plant uses black liquor produced in the craft pulp making process as boiler fuel and converting the steam energy to electric via a steam turbine for the purpose of electric power generation.

Facility overview

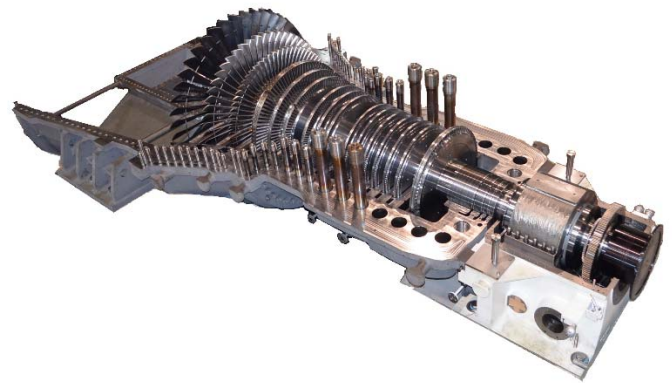
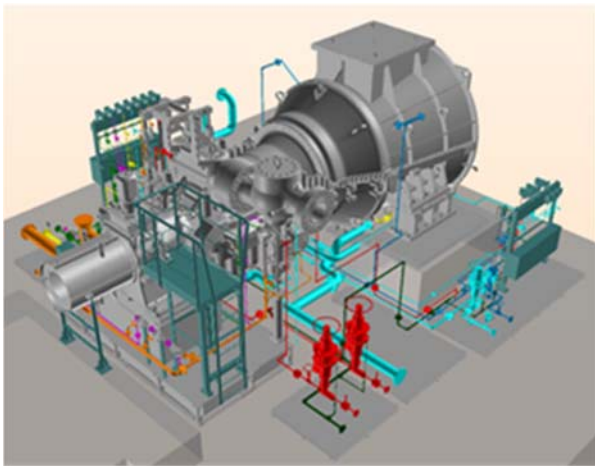
Type : Condensing steam turbine, Impulse type with External extraction steam pressure control (Axial exhaust steam flow type)

Generator output : 62,920kW

Turbine speed : 3600rpm (direct coupling with generator)

Surface condenser : Water cooled type

Operation start : From 2020



Shin Nippon Machinery Co., Ltd has a substantial delivery record of highly reliable steam turbines that are manufactured based on our cutting edge technology. This allows for a stable power supply while also contributing to the lowering of emissions and CO2.